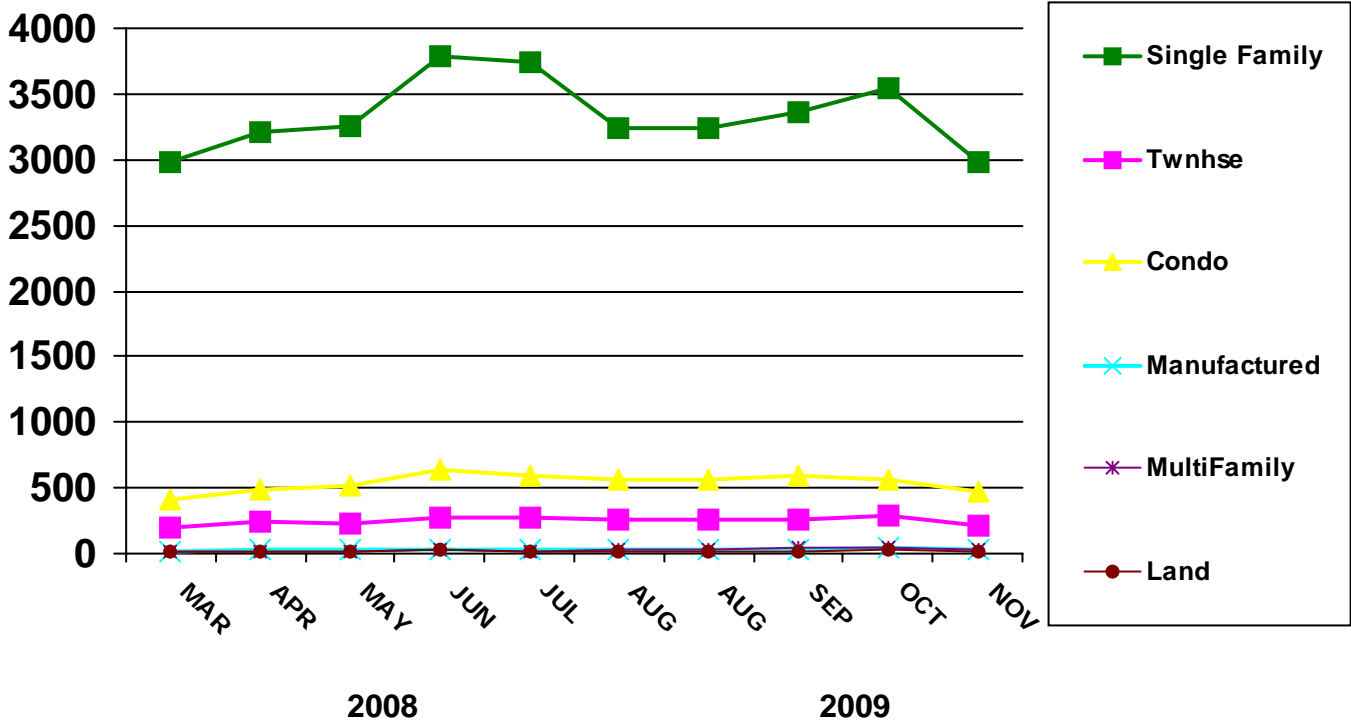




SOLD LISTINGS BY MONTH



| PROPERTY TYPE | JAN | FEB | MAR | APR | MAY | JUN | JUL | AUG | SEP | OCT | NOV | DEC |
|-------------------------------|------|------|------|------|------|------|------|------|------|------|------|------|
| 2007 - Number of Units | | | | | | | | | | | | |
| SINGLE-FAMILY | 373 | 379 | 379 | 387 | 389 | 377 | 375 | 381 | 351 | 373 | 347 | 318 |
| TOWNHOUSE | 224 | 239 | 233 | 245 | 227 | 224 | 223 | 216 | 202 | 210 | 214 | 210 |
| CONDO | 246 | 256 | 235 | 271 | 255 | 230 | 235 | 232 | 228 | 239 | 211 | 253 |
| MANUFACTURED | 158 | 135 | 146 | 140 | 160 | 147 | 137 | 158 | 145 | 117 | 165 | 142 |
| MULTI-FAMILY | 345 | 358 | 409 | 459 | 410 | 393 | 387 | 387 | 425 | 408 | 455 | 289 |
| LAND | 277 | 287 | 291 | 336 | 307 | 344 | 488 | 350 | 329 | 265 | 336 | 213 |
| 2008 - Number of Units | | | | | | | | | | | | |
| SINGLE-FAMILY | 1043 | 1196 | 1601 | 1884 | 2208 | 2346 | 2731 | 2550 | 2788 | 2721 | 2186 | 2503 |
| TOWNHOUSE | 66 | 71 | 93 | 102 | 117 | 117 | 129 | 133 | 145 | 141 | 136 | 155 |
| CONDO | 106 | 114 | 119 | 127 | 170 | 204 | 242 | 251 | 241 | 273 | 256 | 301 |
| MANUFACTURED | 26 | 16 | 14 | 31 | 29 | 16 | 26 | 19 | 22 | 26 | 13 | 10 |
| MULTI-FAMILY | 5 | 3 | 6 | 7 | 5 | 7 | 7 | 6 | 9 | 6 | 9 | 5 |
| LAND | 29 | 28 | 37 | 39 | 33 | 23 | 25 | 18 | 22 | 20 | 16 | 13 |
| 2009 - Number of Units | | | | | | | | | | | | |
| SINGLE-FAMILY | 2226 | 2287 | 2980 | 3205 | 3262 | 3784 | 3739 | 3235 | 3359 | 3541 | 2988 | 0 |
| TOWNHOUSE | 134 | 130 | 200 | 242 | 225 | 279 | 281 | 260 | 263 | 284 | 210 | 0 |
| CONDO | 304 | 312 | 406 | 486 | 510 | 639 | 587 | 556 | 599 | 567 | 478 | 0 |
| MANUFACTURED | 18 | 20 | 22 | 29 | 23 | 30 | 33 | 34 | 38 | 46 | 30 | 0 |
| MULTI-FAMILY | 11 | 12 | 21 | 14 | 19 | 30 | 19 | 29 | 43 | 40 | 37 | 0 |
| LAND | 16 | 6 | 11 | 12 | 14 | 27 | 14 | 15 | 14 | 23 | 15 | 0 |

